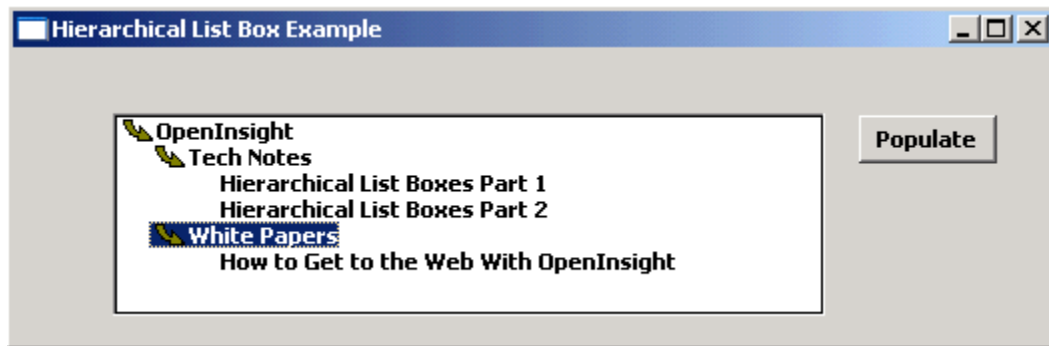


Hierarchical List Box Programming Using A Bitmap

Up to this point, we have been using tabs to display the hierarchy. In this example, we will use a bitmap rather than tabs to indicate the list box level. The end result, with the list box fully populated, displays as shown below:

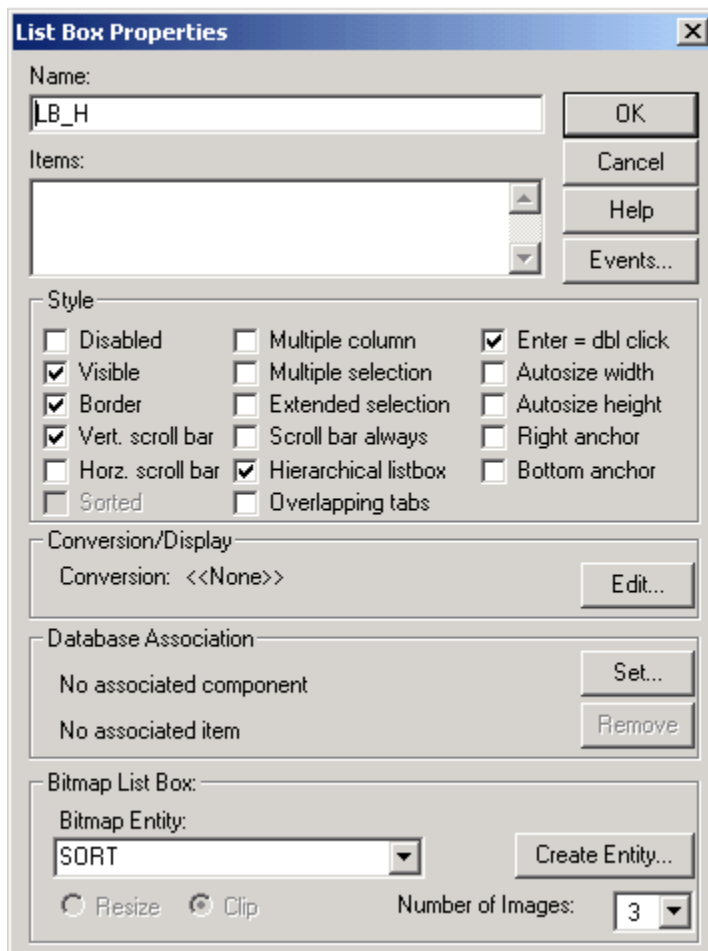


Since the expansion and collapse of the list box occurs automatically when an item is double clicked, there is not need for the **Expand All** or the **Collapse All** buttons that we needed in the tab programming example. In this example, we use the **SORT** bitmap, which has 3 bitmaps, which display as shown below:



The first bitmap is an up arrow, the second the down arrow, and the third is blank.

Set the list box to use the **SORT** bitmap, and set the number of images to **3**, as shown below:



To get this effect, simply populate the list box from the Populate button. Substitute the following in the CLICK event of **B_POPULATE**:

```
case ctrlName = 'B_POPULATE'  
    content = ''  
    content<1> = '2-1:OpenInsight'  
    content<2> = '2-2:Tech Notes'  
    content<3> = '3-3:Hierarchical List Boxes Part 1'  
    content<4> = '3-3:Hierarchical List Boxes Part 2'  
    content<5> = '2-2:White Papers'  
    content<6> = '3-3:How to Get to the Web With OpenInsight'  
    Set_Property(WinId: '.LB_H', 'LIST', content)  
    Send_Message(WinId: '.LB_H', 'EXPAND', 0, 1)
```