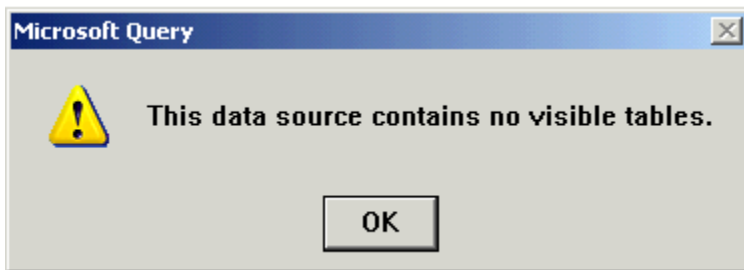
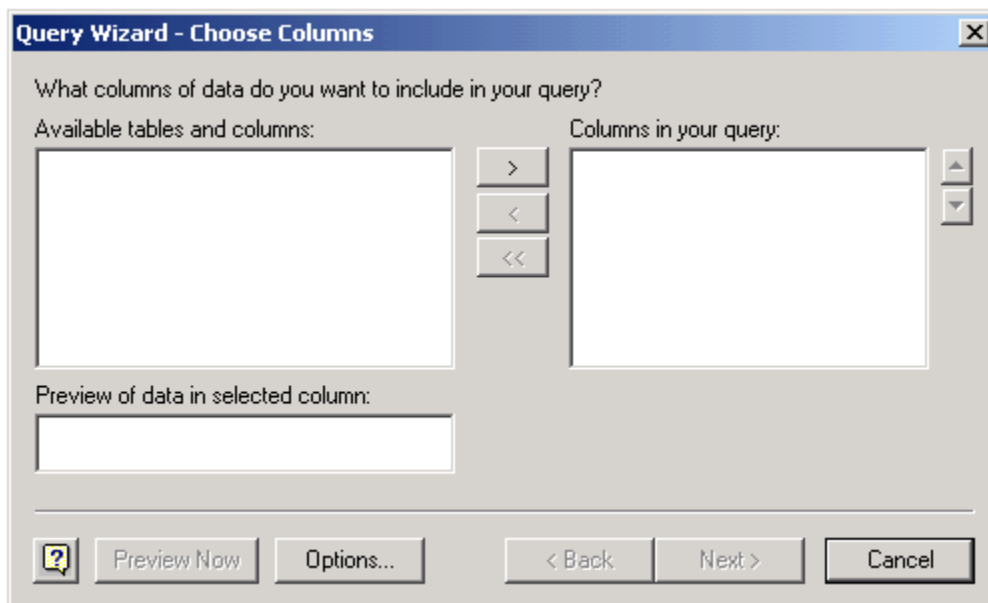


Special Considerations When Using Microsoft Excel

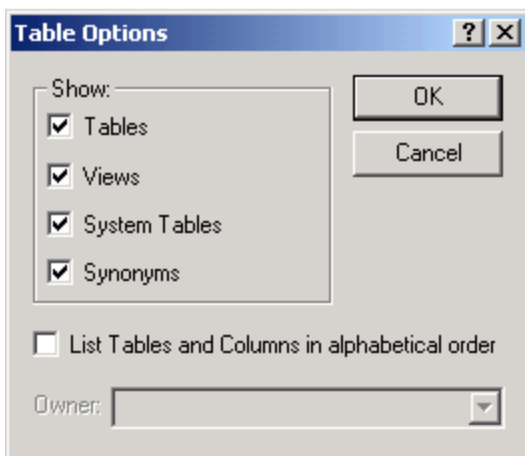
In addition to the above stated formatting issue, there is also an issue with tables being visible in the MS Query wizard used by Excel. The following message is received after requesting a New Database Query and selecting the Revelation ODBC data source:



Currently, there isn't a workaround in Office XP. In Excel 2000, there is a workaround and it is as follows: Click **OK** and the Query Wizard will display without the available tables list populated, as shown below:



Click **Options...** and the **Table Options** dialog displays, as shown below:



The list of tables in the ODBC data source displays, and the query can continue.