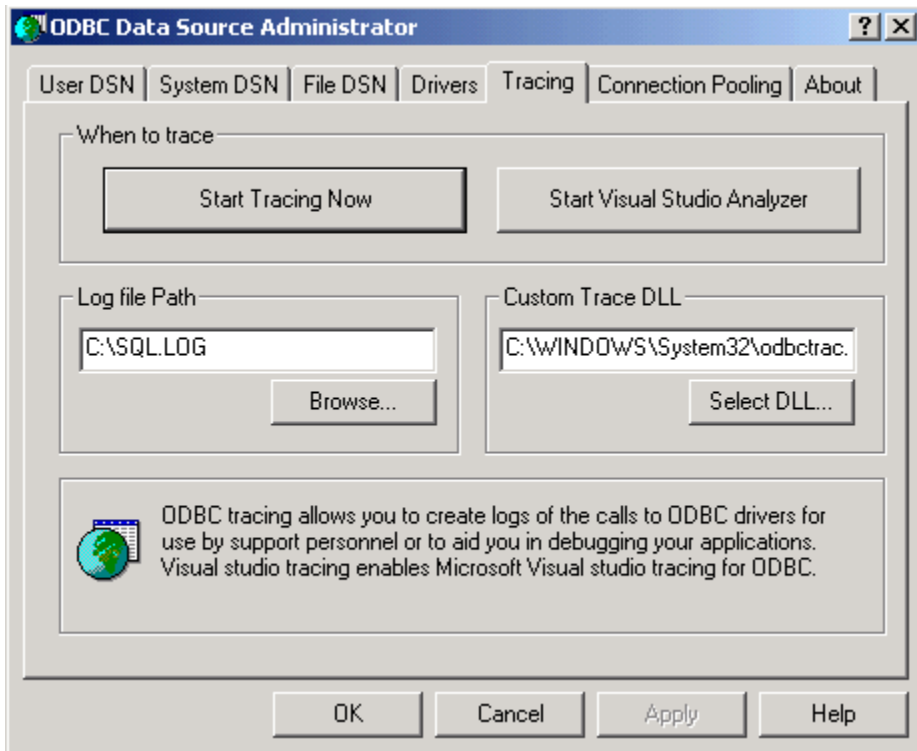


# General Debugging Tips

If ODBC seems to fail, and no specific messages are given, turn on **ODBC tracing**. This can be found in the ODBC Administrator tool, in the control panel. The logs can provide specific details on where the process fails. Below is a sample screen where ODBC tracing can be turned on or off.



The trace slows down the ODBC connection, but the output to the log can be useful.