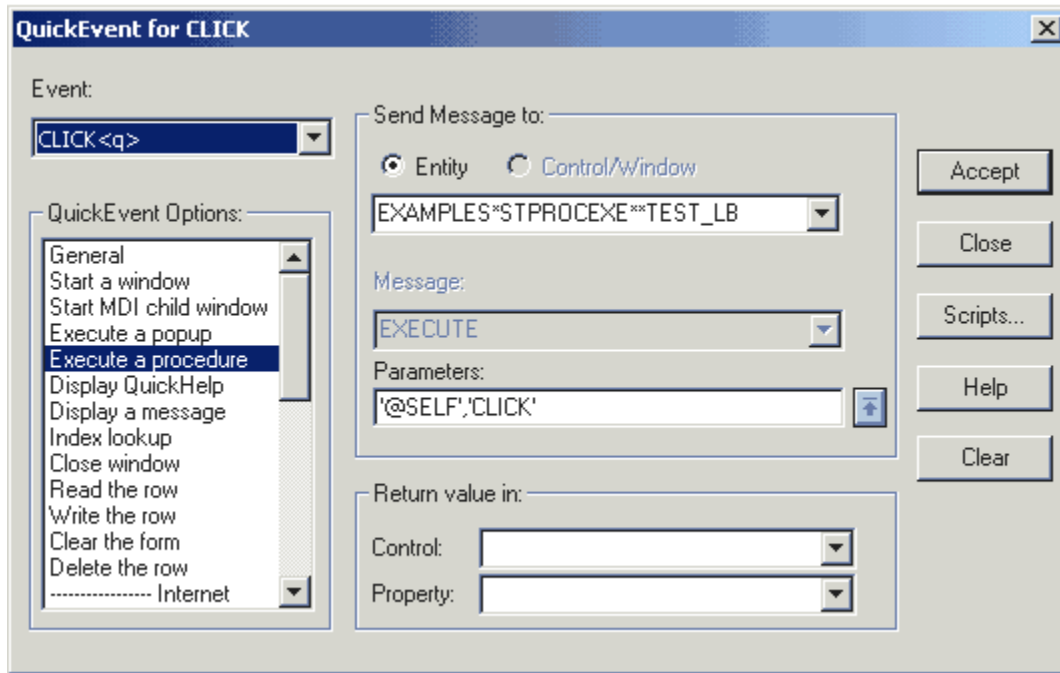


# Displaying the Populated List Box

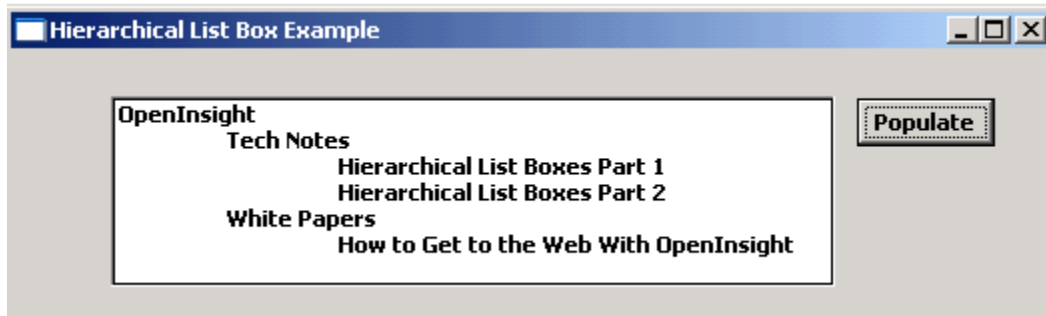
Add a QuickEvent for the **B\_POPULATE** button's CLICK event with a QuickEvent option to Execute a Procedure, **TEST\_LB**. The parameters for the Quick Event should be:

```
'@SELF', 'CLICK'
```

The settings should display as shown below:



When the window is run, after the **B\_POPULATE** button is clicked, the hierarchical list box should be populated as shown below:



Note how the tabs are used to display the outline levels.