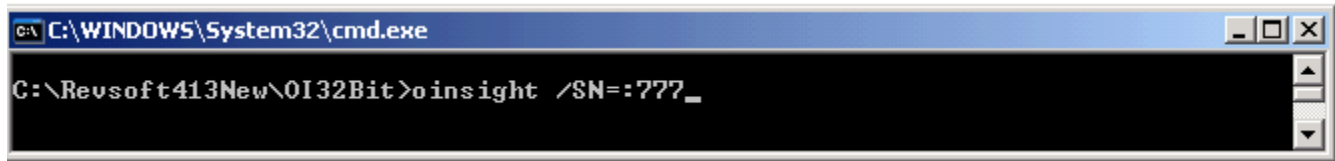


Running OpenInsight as a Server

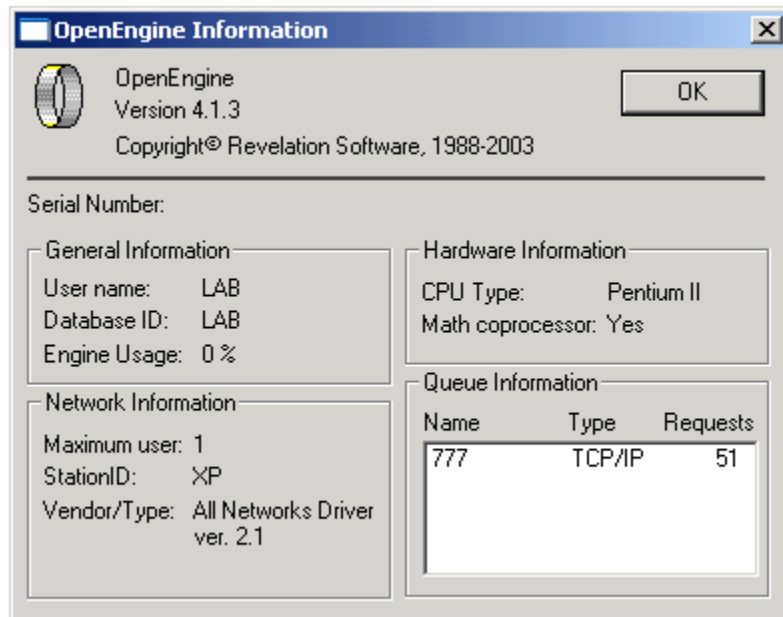
The next step is to run OpenInsight as a server, processing stored procedures based on requests from the Visual Basic client. OpenInsight will run using the TCP/IP protocol, on Port 777, by entering the following command:



```
C:\WINDOWS\System32\cmd.exe
C:\Revsoft413New\OI32Bit>oinsight /SN=:777_
```

Note the colon preceding the port number, which indicates that the local host will be used at Port 777. Log into the application database.

In this example, OpenInsight will use a database called **LAB** and the username called **LAB**. The EngineInfo window in OpenEngine should display similar to the following:



The Queue Information list box contains an entry with the name **777** and the type **TCP/IP**, indicating that OpenEngine is running. Also the Database ID is called **LAB** and the User name is called **LAB**.