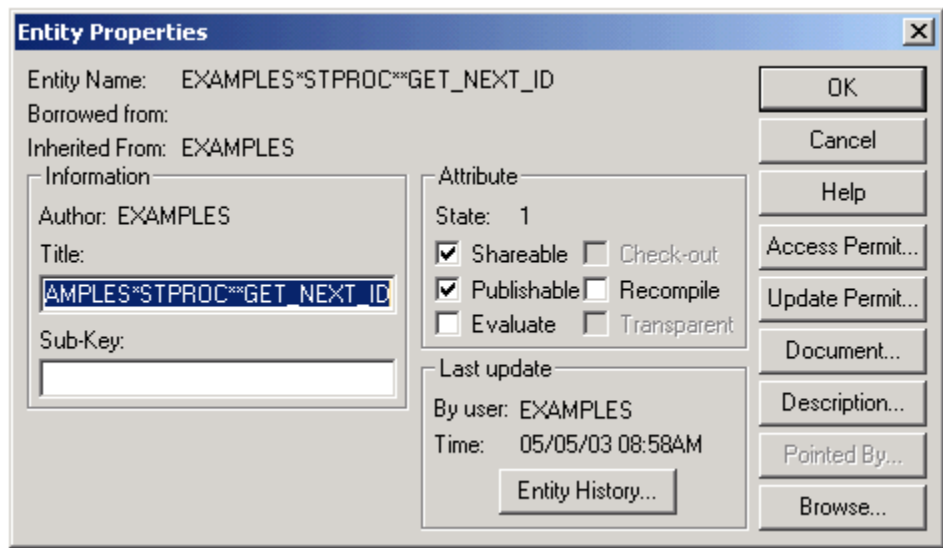


Entity Properties Dialog Box

The Entity Properties dialog box displays as shown below:



Each entity in an application has several configurable properties. Use this dialog box to examine or modify those properties.

Entity Name	The fully qualified entity identifier
Borrowed from	Application entity was inherited from. If an alias, then the originating application
Inherited from	The parent application structure

Information group

Author	Name of user who created the entity
Title	Fully qualified entity identifier of parent
Sub-Key	Key to a type-specific table; relative path to an entity not created in OpenInsight

Attribute group

State	An integer value; use to determine the relative state of development
Shareable	Entity can be lent to other applications
Publishable	Entity will be included in the deployed version of the application
Evaluate	Needs to be evaluated (some change has occurred in one or more sub-entities); a flag will appear next to this entity, in the outliner
Check-out	Calculated property; checked when entity is checked out with locks.
Recompile	Will be recompiled

Last update group

Besides the user and date/time information listed here, you can click the Entity History... button for a detailed list of modifications made to this entity since its creation.