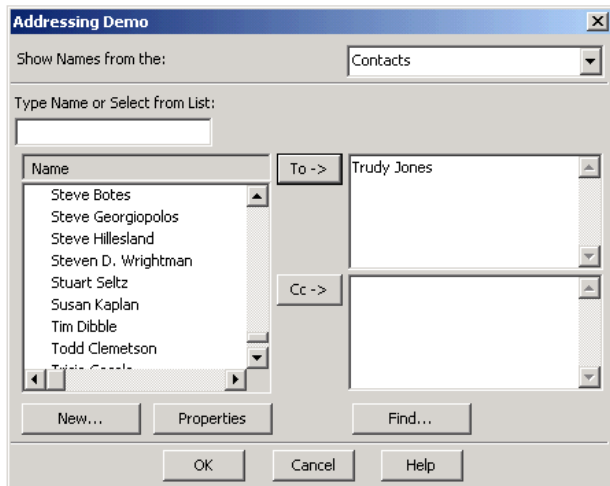


MAPIAddress Function

Description

Displays a standard address list dialog box allowing users to create or modify a set of To:, CC: and BCC: recipients. Below is a sample address book display, after running the example code for this function:



Syntax

status = **MAPIAddress** ([*session*] [, *parent*] [, *flags*] [, *caption*] [, *edits*] [, *label*] [, *to*] [, *cc*] [, *bcc*])

Parameters

The MAPIAddress function has the following parameters.

Parameter	Description
<i>session</i>	Contains a MAPI session handle returned by MAPILogon. If not specified a system default session will be initiated, if possible, or a sign-in dialog box will be displayed. In any case, MAPI will return to its previous state upon completion of the function.
<i>parent</i>	Contains the name of an OpenInSight parent window. If not specified the dialog box will be application modal.
<i>flags</i>	<p>Contains information about session initiation. It could be MAPI_LOGON_UI\$, MAPI_NEW_SESSION\$, or a combination of these flags.</p> <ul style="list-style-type: none">MAPI_LOGON_UI\$ indicates that MAPI should display a sign-in dialog box, if necessary. If the session parameter is specified this flag is ignored.MAPI_NEW_SESSION\$ indicates that MAPI should establish a new session and not attempt to share another MAPI client's session or the default session. If the session parameter is specified this flag is ignored. <p>The insert record MAPI_EQUATES contains these flags. You may combine flags by adding them together with an addition sign (+).</p>
<i>caption</i>	Contains a caption for the dialog box. If not specified the caption "Address Book" will be used.
<i>edits</i>	Contains the number, from 0 to 4, of edit controls the dialog box should contain. A value of 0 will allow address list browsing only. A value of 1 will include an edit control for To: recipients. A value of 2 will include an edit control for CC: recipients. A value of 3 will include an edit control for BCC: recipients. A value of 4 will include edit controls for each type of recipient supported by the underlying messaging system. If not specified edit controls for all three types of recipients will be included.
<i>label</i>	Contains a label for the dialog box's To: recipients edit control. If the edits parameter is not 1 this parameter is ignored. If not specified the label "To:" will be used.
<i>to</i>	On input contains an @FM-delimited list of initial To: recipients for the dialog box. On output contains an @FM-delimited list of the final To: recipients selected by the user.
<i>cc</i>	On input contains an @FM-delimited list of initial CC: recipients for the dialog box. On output contains an @FM-delimited list of the final CC: recipients selected by the user.
<i>bcc</i>	On input contains an @FM-delimited list of initial BCC: recipients for the dialog box. On output contains an @FM-delimited list of the final BCC: recipients selected by the user.

Returns

1 for successful execution or 0 for failure.

If function execution fails, you can retrieve a text error message by calling the `Get_Status` function. For example, to display an error message on the screen, include the following error handling routine in your code:

```
Get_Status(ErrMsg)
```

```
Msg(@window, ErrMsg)
```

See also

[Get_Status\(\)](#), [MAPISendMail\(\)](#)

Example

```
Subroutine DemoMAPIAddress(var)
*   Display addressing dialog box starting with Trudy
$INSERT MAPI_EQUATES
Declare Subroutine Msg, Get_Status
Declare Function MAPIAddress
flags = MAPI_LOGON_UI$
to     = "Trudy Jones"
cc     = ""
lf     = char(10)
if MAPIAddress(0, 0, flags, "Addressing Demo", 2, "", to,|
    cc) then
    swap @FM with ";" in to
    swap @FM with ";" in cc
    display = "To: ":to:lf:"CC: ":cc
    Msg(@window, display)
end else
    Get_Status(display)
    Msg(@window, display)
end
return
```

Remarks

After the addressing dialog completes successfully the `to`, `cc` and `bcc` parameters will be updated to contain the user's final recipient selections.