

# TooltipsEnabled

Enables tooltips.

## Usage

```
Set_Property(OLECtrlEntID, "OLE.TooltipsEnabled", Boolean)
```

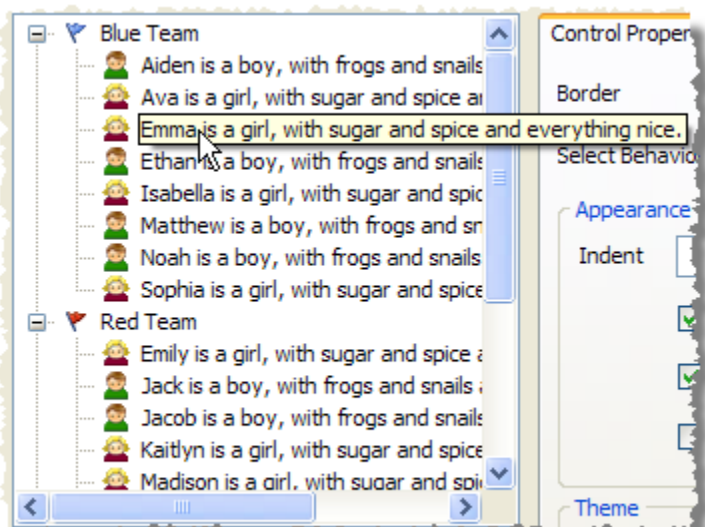
## Values

[True | False]

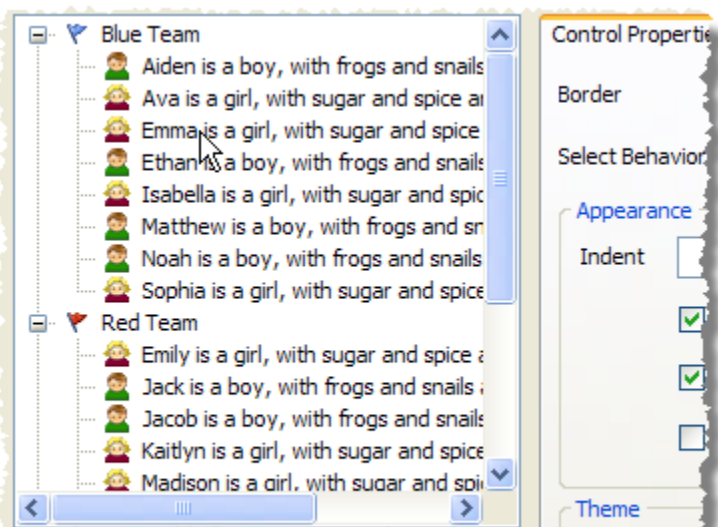
**Default:** True

## Remarks

The TooltipsEnabled property enables or disables the tooltips that appear when hovering over an item whose text does not fit entirely within the control. By default, tooltips are enabled, but you may disable them by setting this property to zero.



**Tooltips Enabled**



**Tooltips Disabled**

## Example

```
// Disable tooltips  
Set_Property(@Window:".OLE_TREE", "OLE.TooltipsEnabled", 0)
```