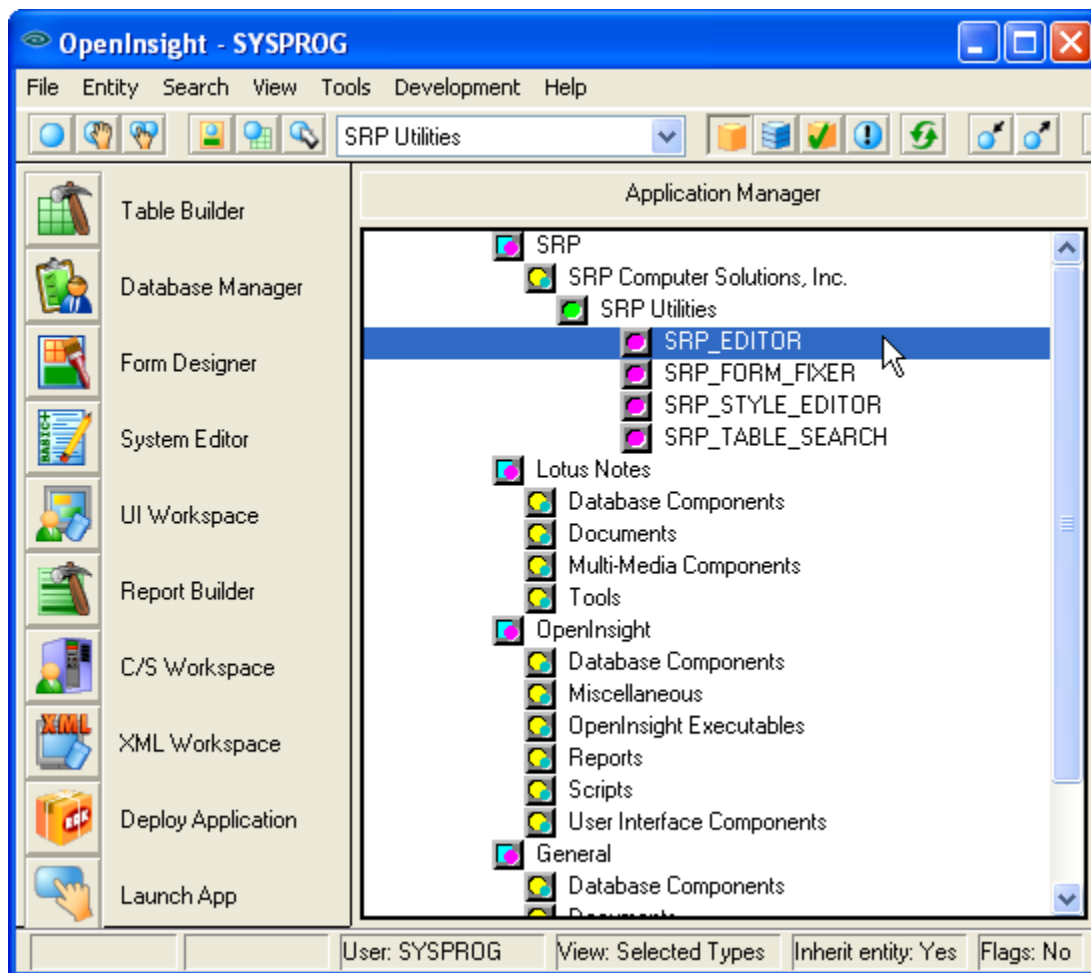


# Launching the SRP Editor

After the SRP Editor has been installed you have two primary ways available to launch it. First, a new repository type for all SRP utilities has been created. Once you have the utilities list displayed just double-click (or click and <enter>) the SRP\_EDITOR item:



Alternatively, since the SRP Editor is primarily an OpenInsight form, it can be launched using the normal methods of executing OpenInsight forms (shift and double-click or shift and <enter>):

