

# SRP Backup Utility

Performs an automated backup of application files.



[Product Information](#)

[Version History](#)

[Download](#)

## Syntax

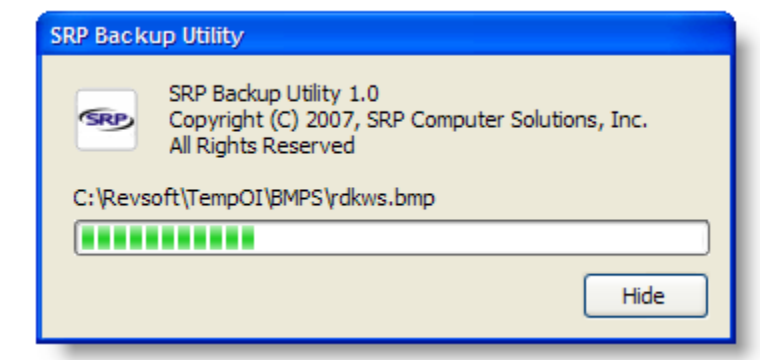
```
SRP_Backup( Zip, LauncherINI, Files, FTP, Hidden )
```

## Parameters

Parameter	Description
Zip	The output Zip file to contain the backup
LauncherINI	The SRP Application Launcher INI file
Files	The files to backup
FTP	The FTP configuration
Hidden	Determines if the backup status window appears by default

## Remarks

The SRP Backup Utility backs up your application in 3 automatic steps. First, the running application is closed. Second, the files you select are backed up into a zip file. Finally, the backup file is optionally transmitted to an FTP site of your choosing.



There are five easy to use parameters:

### Zip

**Required.** The Zip parameter is the path and filename of the output zip file, the file to contain the backup.

### LauncherINI

The LauncherINI parameters is the path and filename to the INI file matching this application's launcher. If you do not use the SRP Application Launcher, then leave this blank. If you do use the SRP Application Launcher, then passing the INI file will allow the SRP Backup Utility to set the PreventExecution flag, which will prevent users from logging into your application during the backup process.

## Files

The Files parameter is the list of files to backup. If left blank, then the entire application folder is backed up. However, you can pass an @FM delimited list of files and folders. You can include relative paths but they *must* begin with "\", "\.", or "..\". You can also use wild cards. For example:

```
Files = "*.ocx":@FM:?DATAVOL":@FM:"OI*.*":@FM:"ProgRef.chm"
```

This example will backup all ocx files, the Datavol directory, all files beginning with OI, and the ProgRef.chm file.

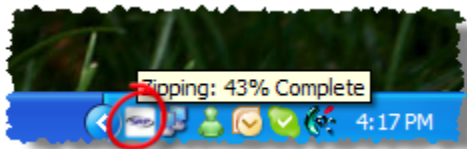
## FTP

The FTP parameter configures the FTP server to which the backup is to be automatically transmitted. Leave this blank if you do not wish to copy the backup to an FTP server. This parameter has the following structure, should you choose to use it:

Pos	Name	Description
<1>	FTP Server	The URL pointing to the FTP server
<2>	FTP Username	The FTP account username
<3>	FTP Password	The FTP account password
<4>	FTP Directory	The subdirectory, relative to the root of FTP, within which the backup is to be copied

## Hidden

By default, a status window appears to indicate the backup progress. Set this parameter to 1 if you want the status window hidden. In either case, an icon will appear in the system tray during the backup process.



## Example

```
* Backup everything
SRP_Backup("Backup.zip", "SRP Launcher.INI")
```

```
* Backup specific files, FTP them, and hide the status window
Files = "*.ocx":@FM:"DATAVOL":@FM:"OI*.*":@FM:"ProgRef.chm"
FTP = "www.myftp.com":@FM:"username":@FM:"password":@FM:"BACKUPS\MYAPP"
SRP_Backup("Backup.zip", "SRP Launcher.INI", Files, FTP, 1)
```

---

Search this documentation