

# Set\_IDXSvr Function

## Description

Toggles the dedicated indexing mode. To turn dedicated indexing on, pass 1; to turn dedicated indexing off, pass 0 (zero).

## Syntax

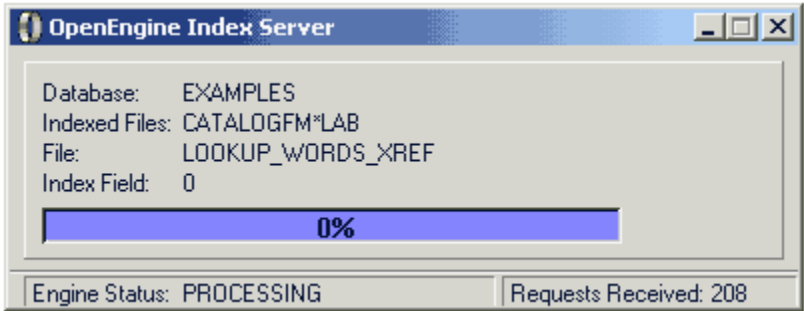
**Set\_IDXSvr** (*action*)

## Parameter

The Set\_IDXSvr() function has the following parameter:

Parameter	Description
<i>action</i>	0 = Turn dedicated indexing off 1 = Turn dedicated indexing on

When dedicated indexing is on, OpenEngine displays as an indexing server. Below is a sample OpenEngine display as an index is being updated:



## See also

[Set\\_Bgnd\\_IX\\_Time\(\)](#)

## Example

```
subroutine TurnOffIndexer(void)
declare subroutine Set_Bgnd_IX_Time, Set_IDXSvr
* turn off dedicated indexing
Set_IDXSvr(0)
* reset background indexing delay to zero (no indexing)
Set_Bgnd_IX_Time(0)
return
```